

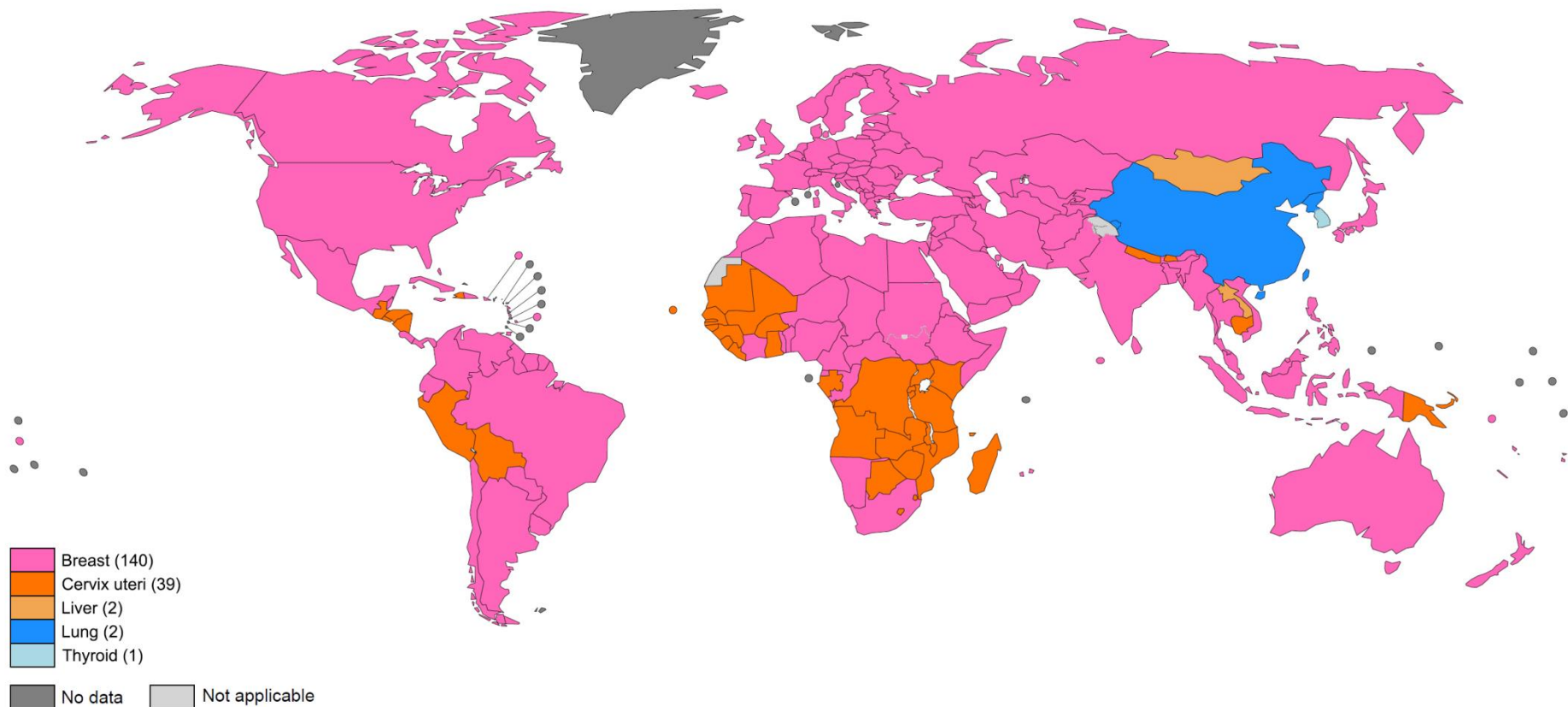


Benchmarking Breast Cancer Survival: International Collaborative Research Platform to Improve Patients' Outcome

International Agency for Research on Cancer
Lyon, France

Isabelle Soerjomataram
Section of Cancer Surveillance, IARC/WHO

Breast Cancer – Global Burden



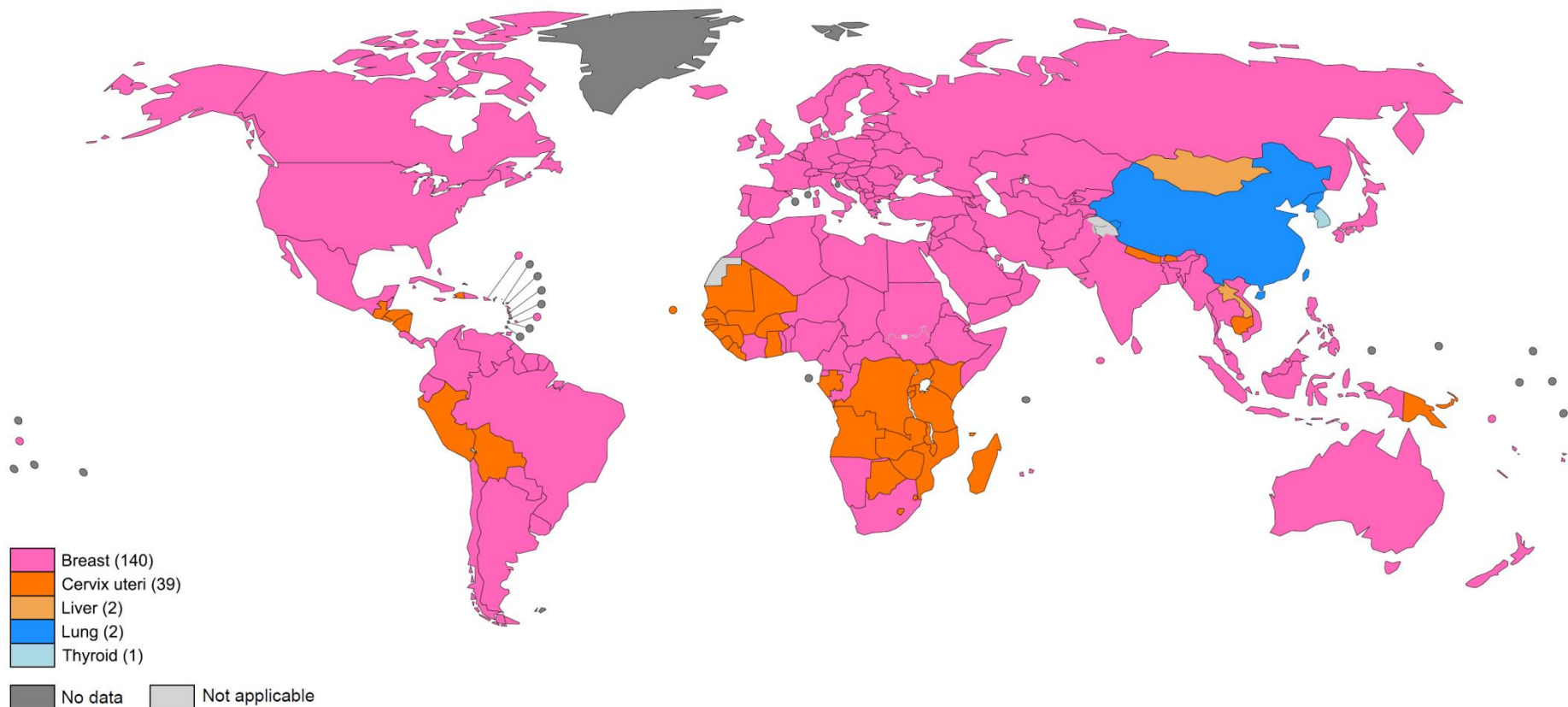
The boundaries and names shown and the designations used on this map do not imply the expression of any opinion whatsoever on the part of the World Health Organization concerning the legal status of any country, territory, city or area or of its authorities, or concerning the delimitation of its frontiers or boundaries. Dotted and dashed lines on maps represent approximate border lines for which there may not yet be full agreement.

Data source: GLOBOCAN 2012
Map production: IARC
World Health Organization



© WHO 2017. All rights reserved

Number 1 in many countries



The boundaries and names shown and the designations used on this map do not imply the expression of any opinion whatsoever on the part of the World Health Organization concerning the legal status of any country, territory, city or area or of its authorities, or concerning the delimitation of its frontiers or boundaries. Dotted and dashed lines on maps represent approximate border lines for which there may not yet be full agreement.

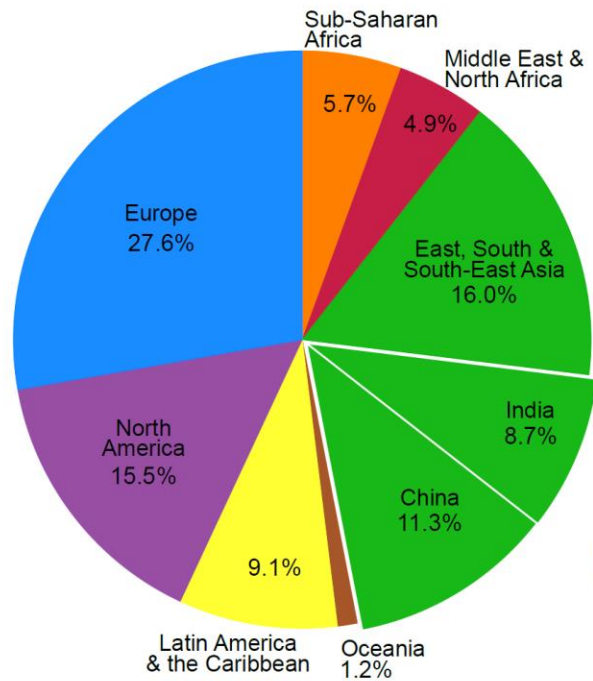
Data source: GLOBOCAN 2012
Map production: IARC
World Health Organization



© WHO 2017. All rights reserved

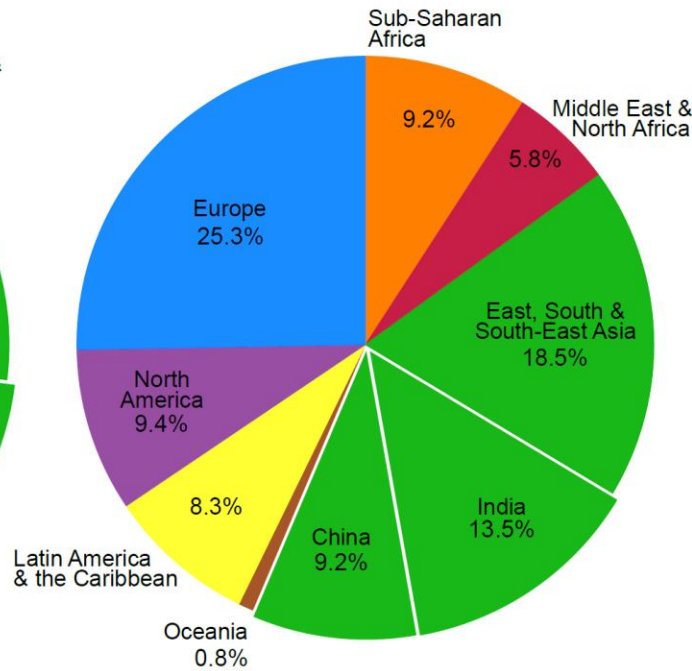
Breast Cancer by World Region

Incidence



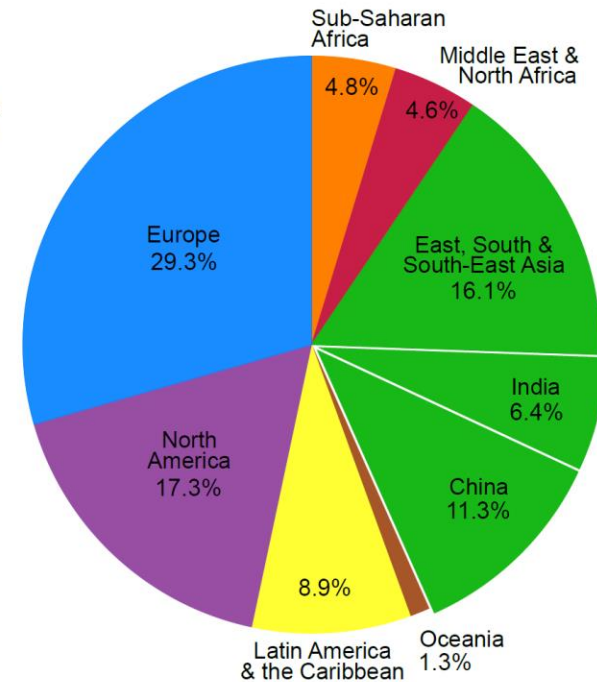
1.7 million estimated new cases

Mortality



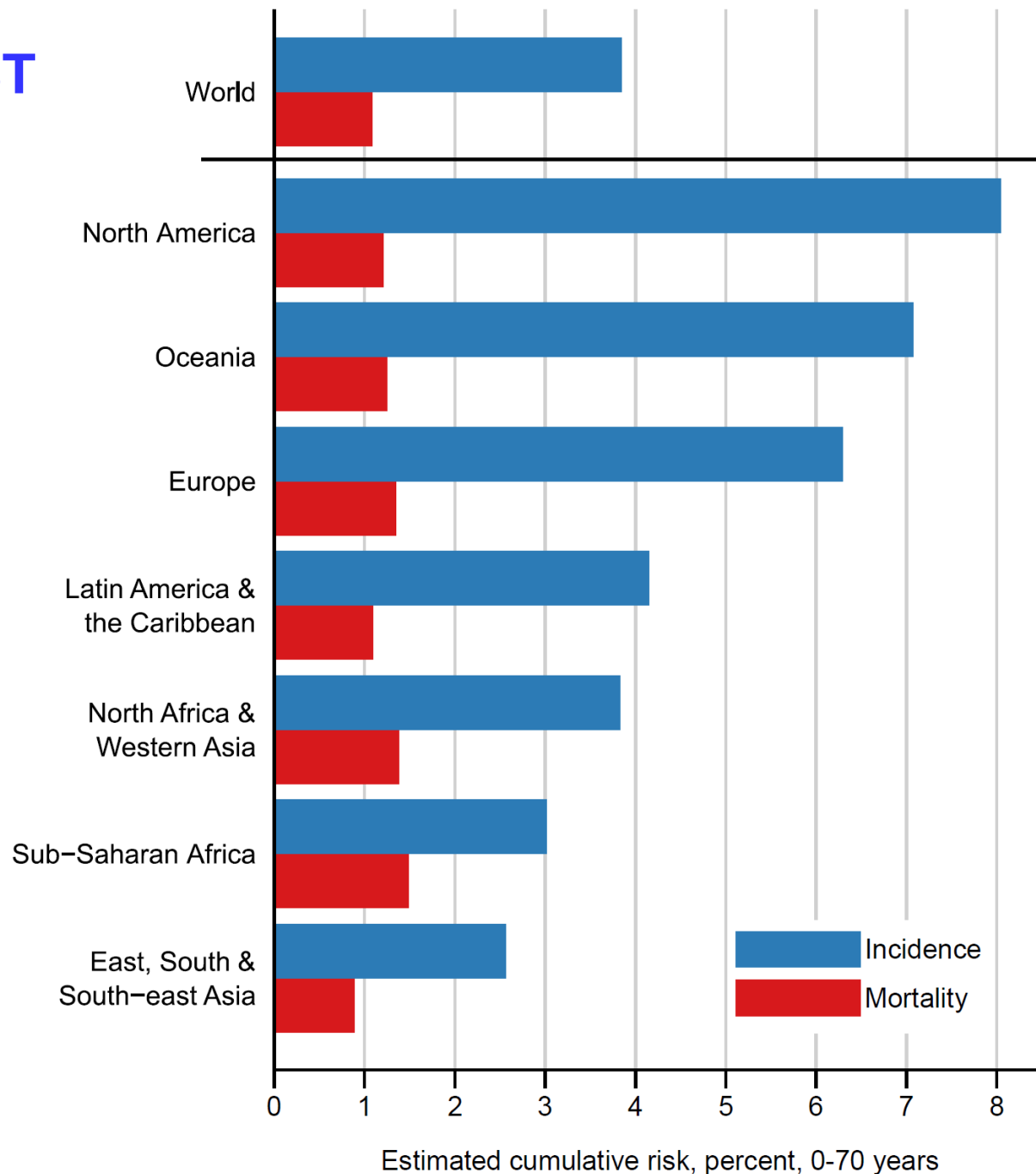
522 000 estimated deaths

5- year prevalence

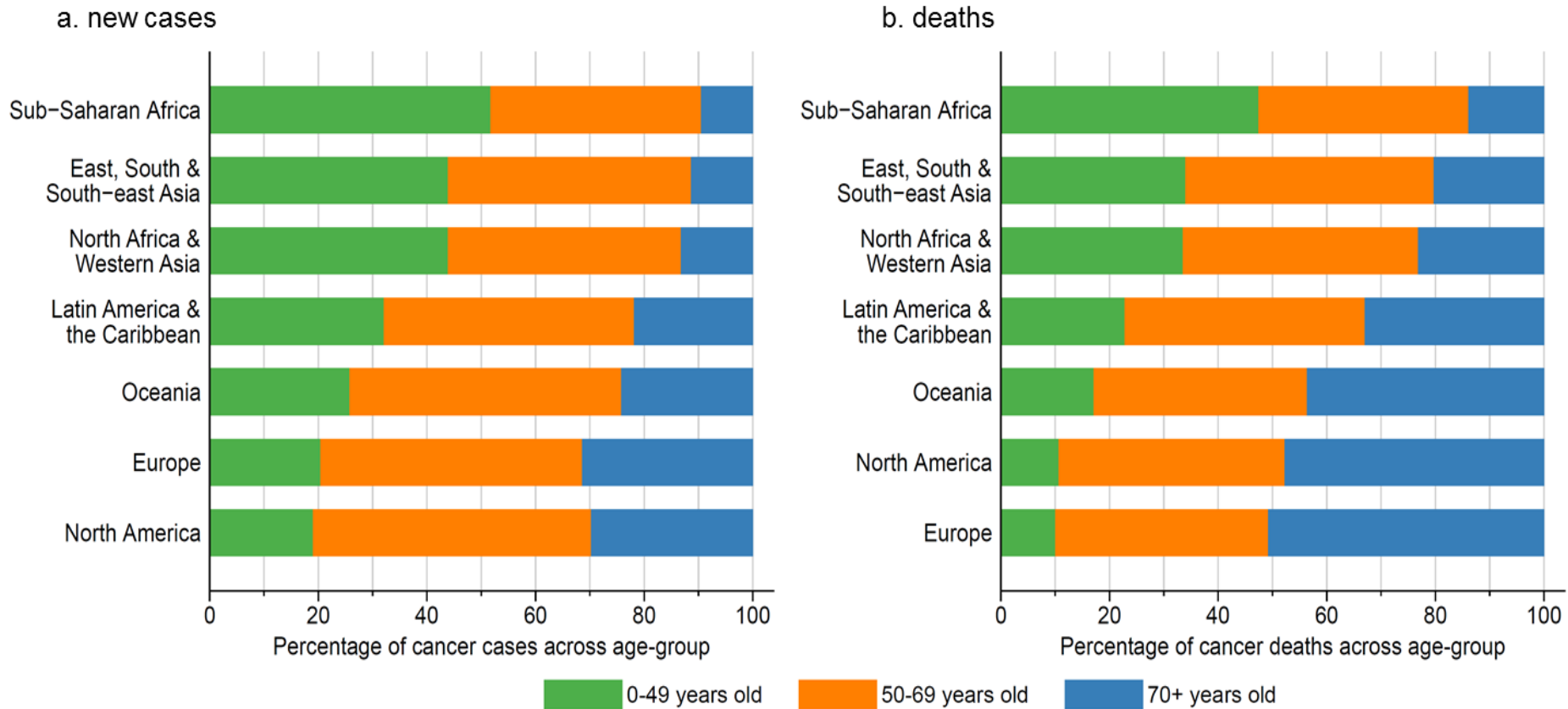


6.2 million estimated persons

RISK OF BREAST CANCER, by REGION



Proportion of breast cancer cases, and deaths by age groups and regions



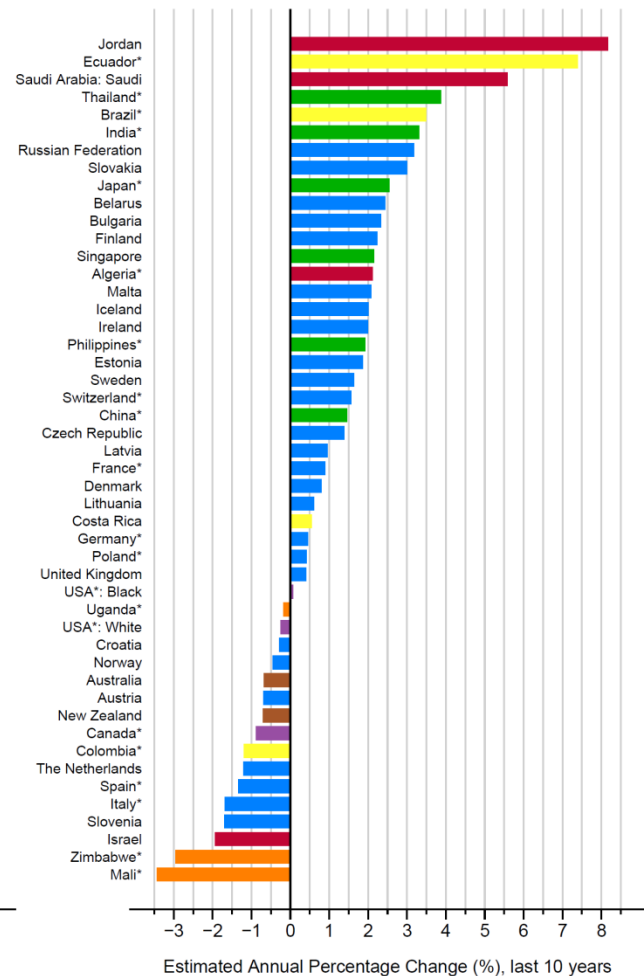
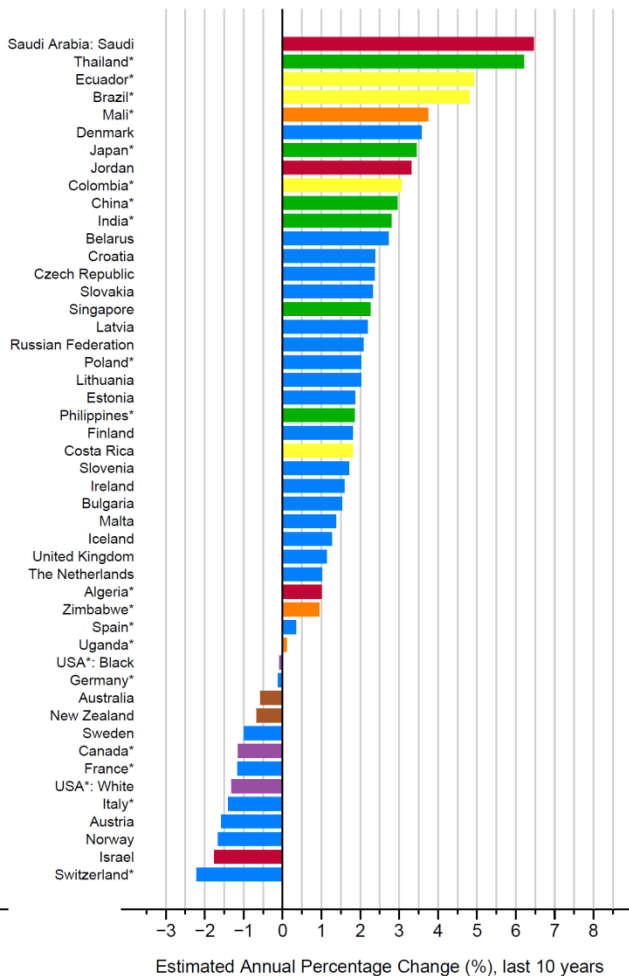
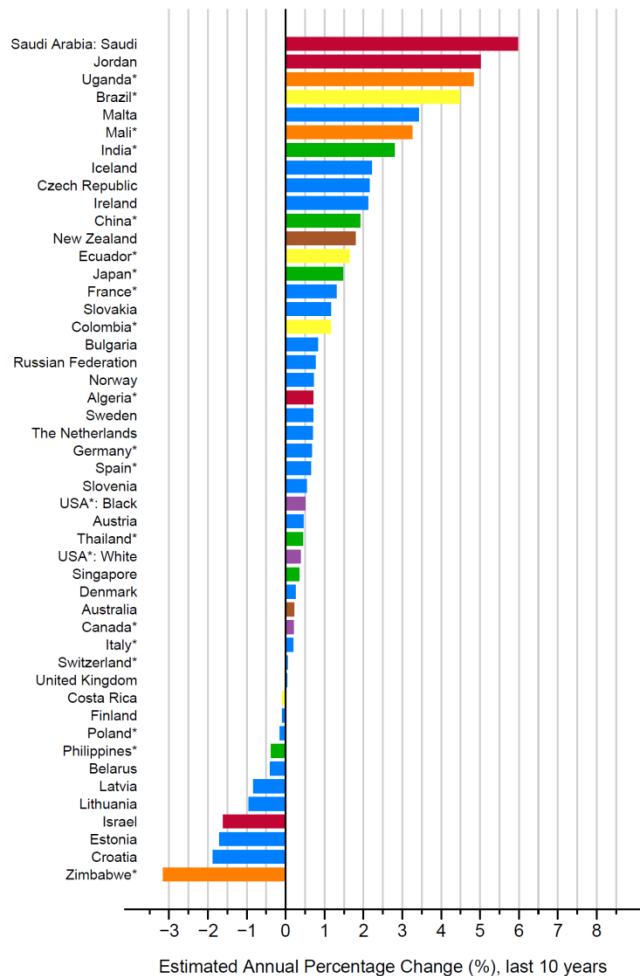
New Cases: Recent trends by age

Incidence

Less than 50 years

50-69 years

More than 70 years



■ Sub-Saharan Africa
 ■ Middle East & North Africa
 ■ East, South & South-east Asia
 ■ Oceania
 ■ Latin America & the Caribbean
 ■ North America
 ■ Europe
 *: Regional registries



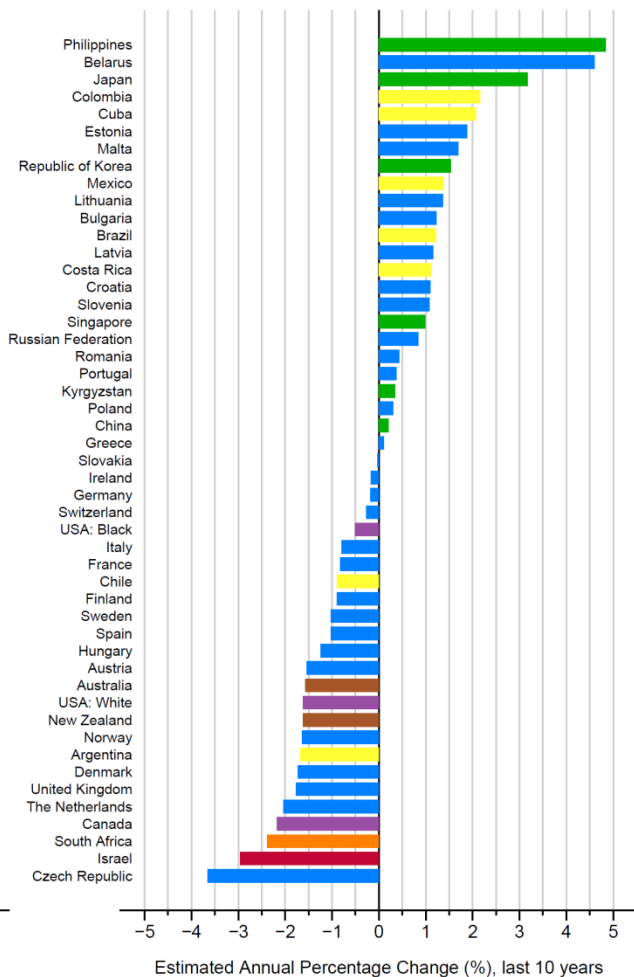
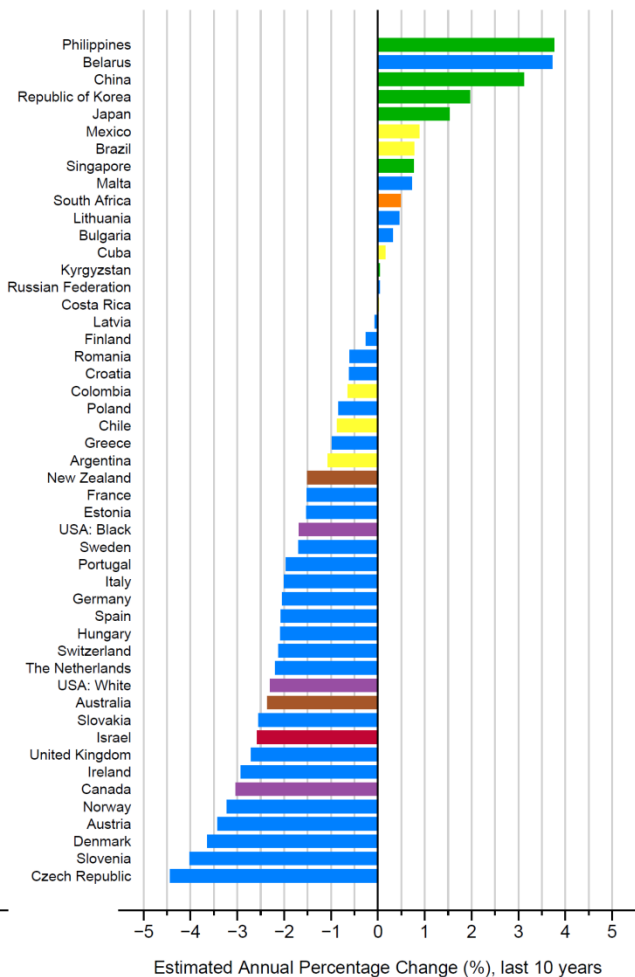
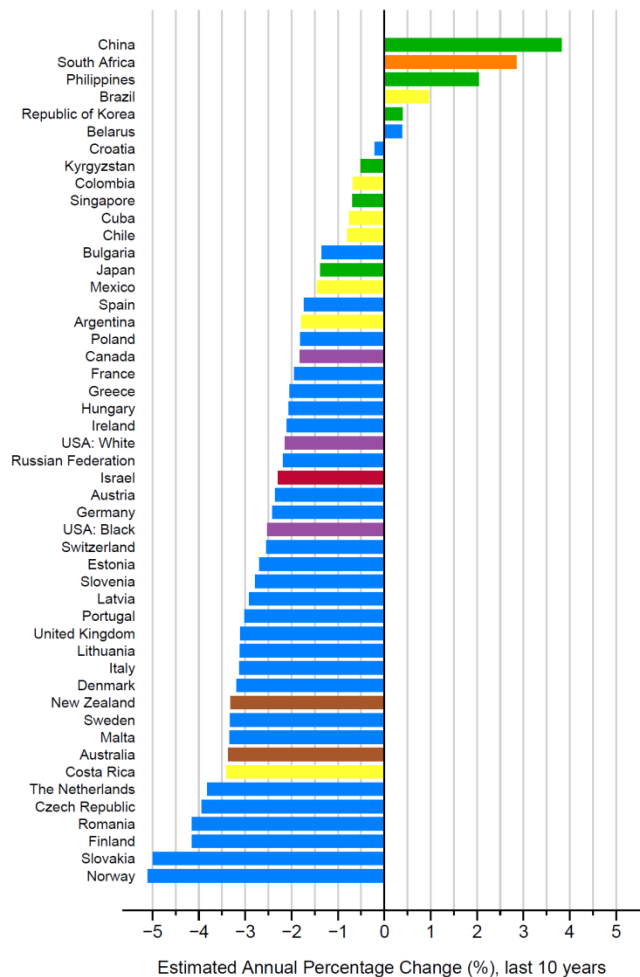
Deaths: Recent trends by age

Mortality

Less than 50 years

50-69 years

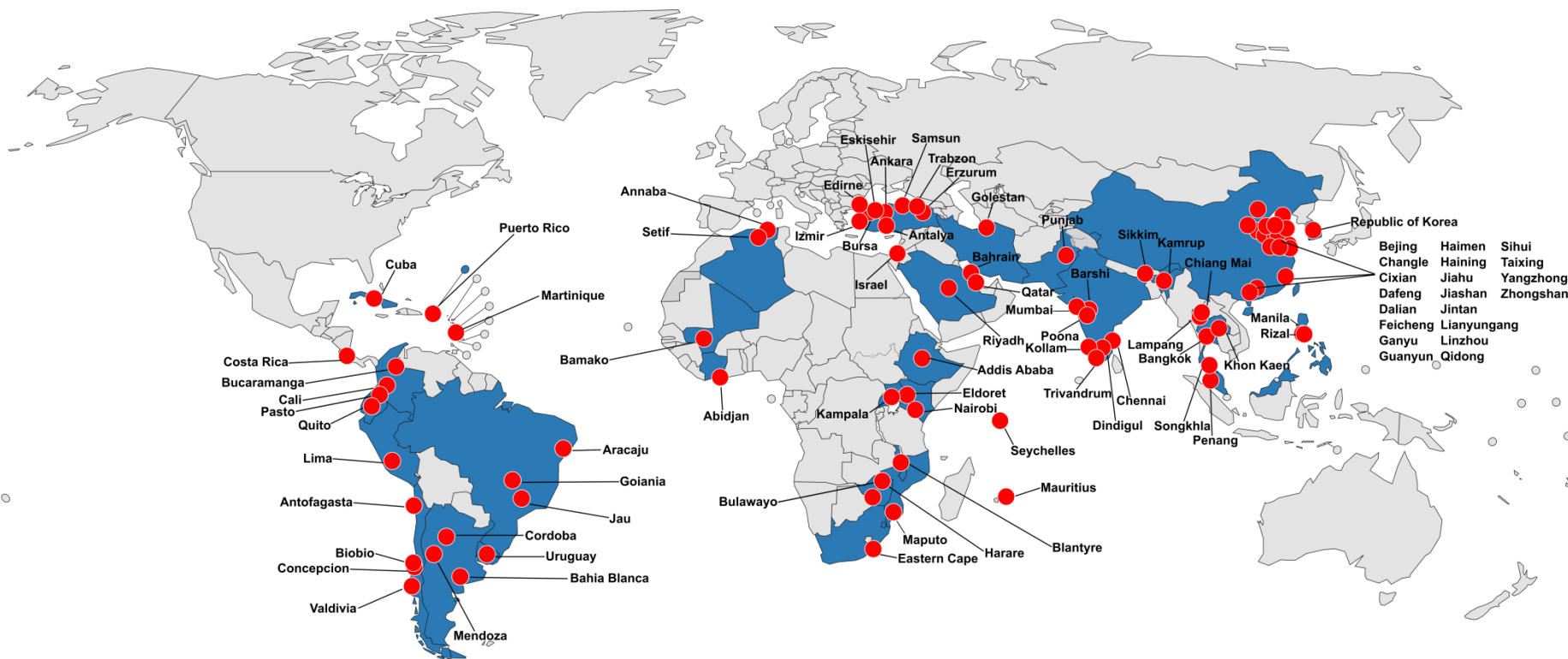
More than 70 years



BREAST CANCER SURVIVAL

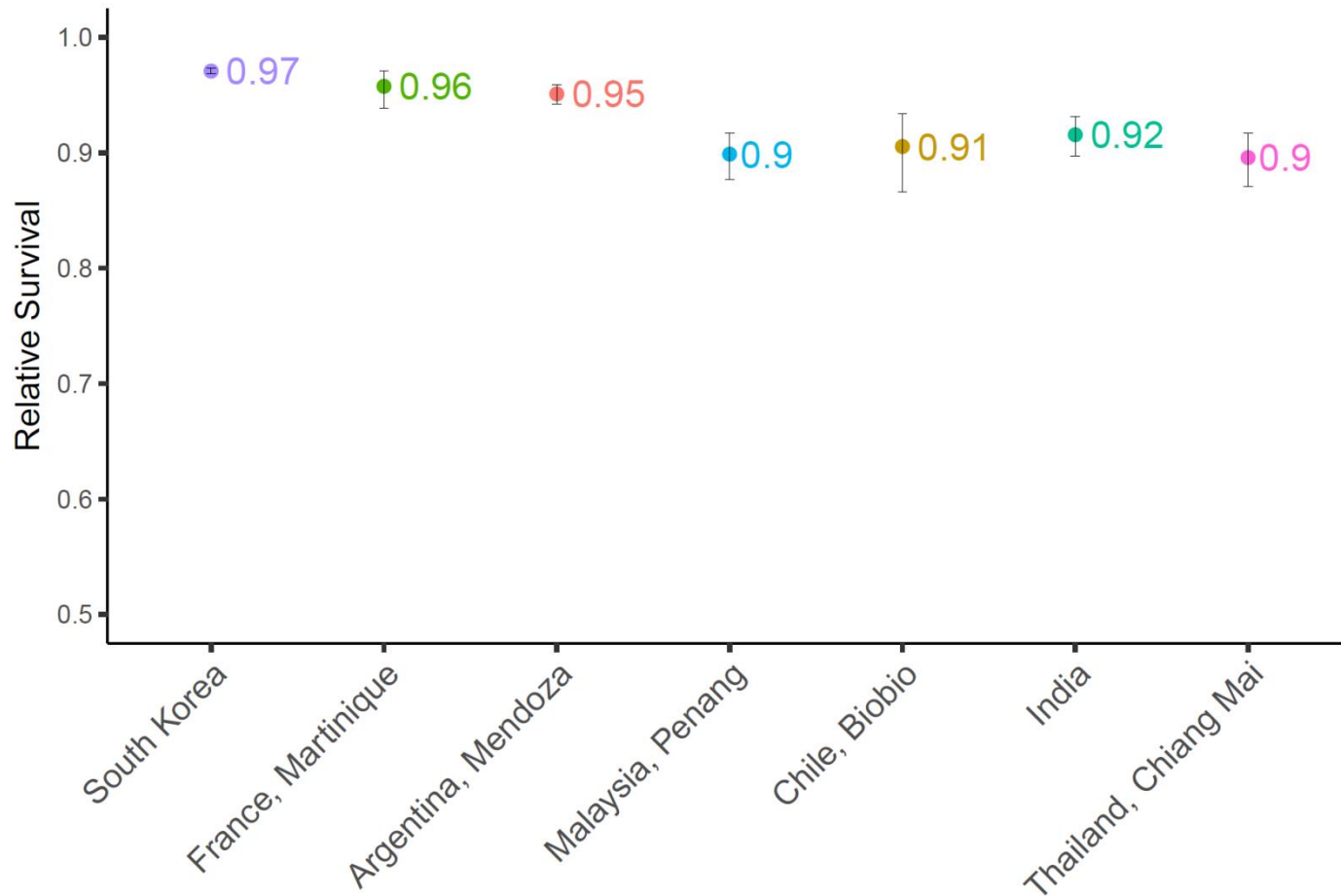


SURVCAN-3: Survival from Cancer

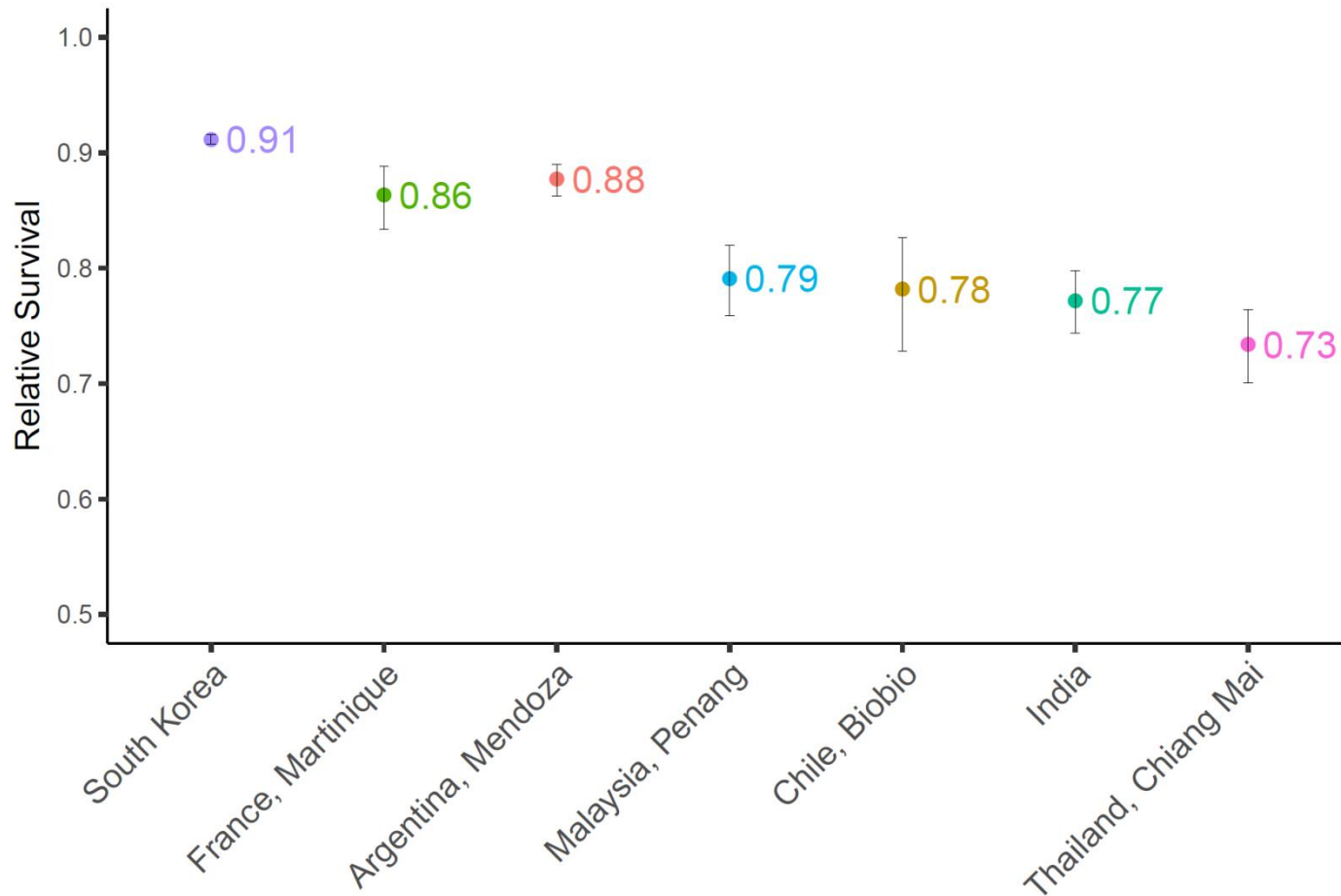


86 cancer registries from 36 countries

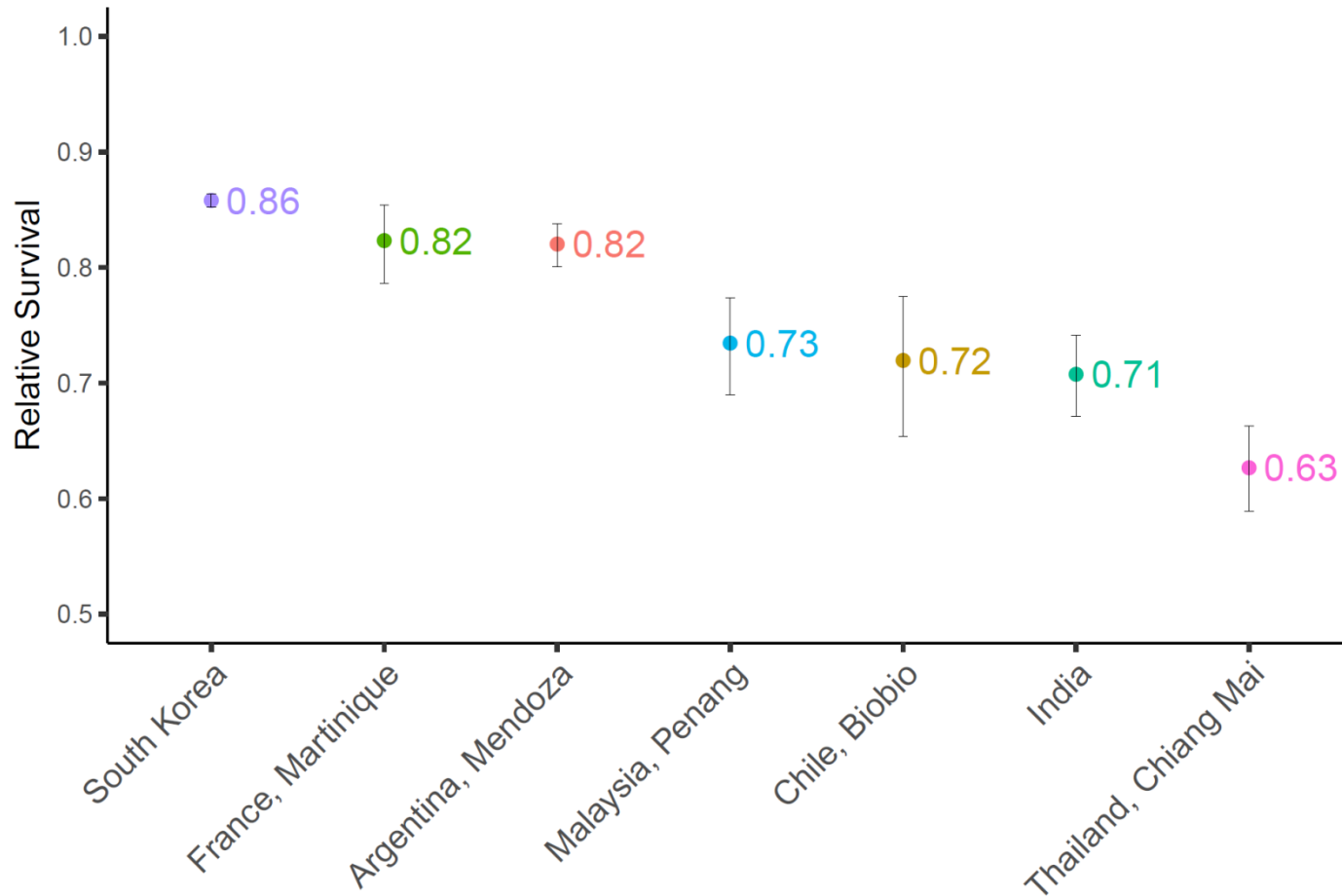
Breast cancer survival (1 year), all ages



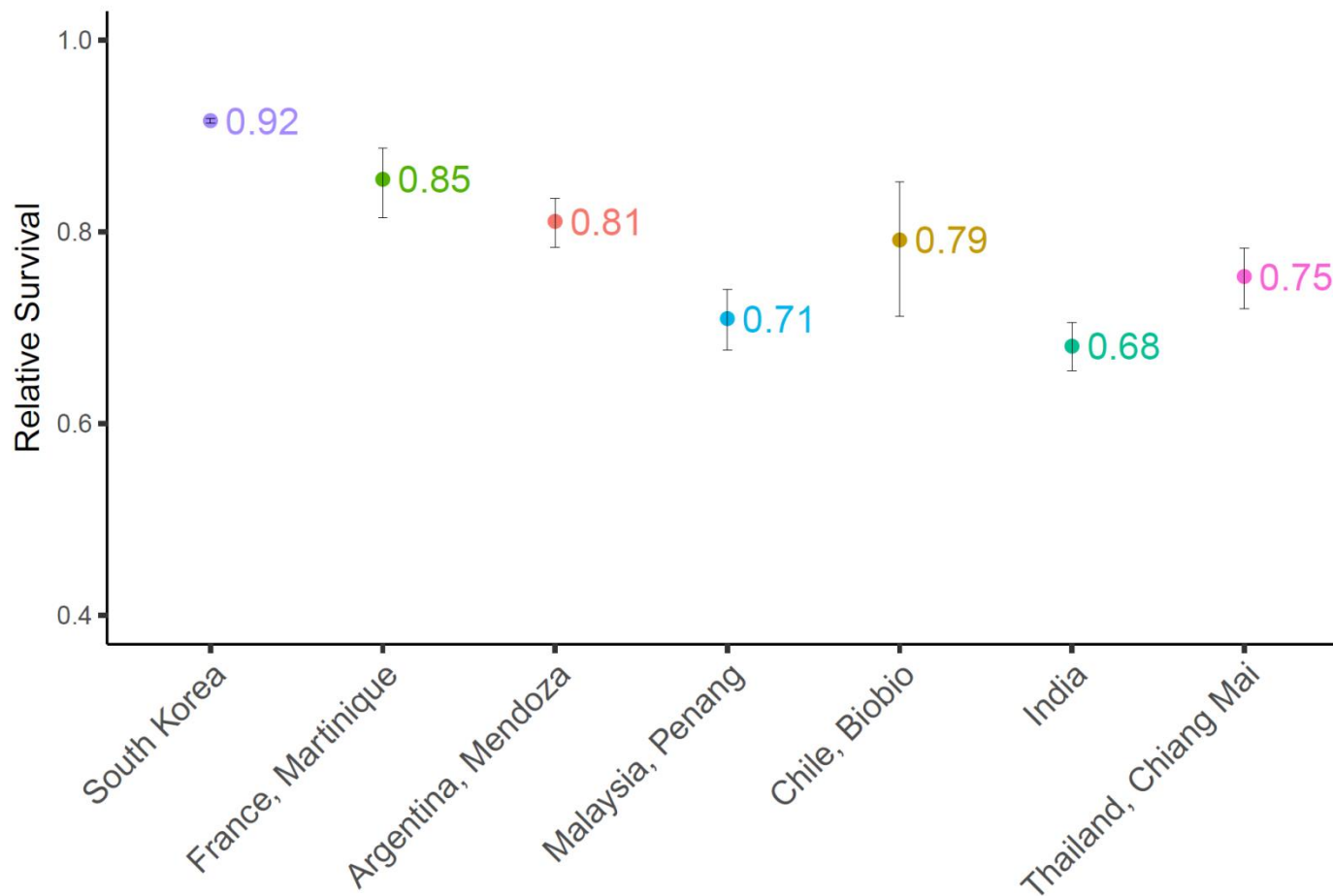
Breast cancer survival (3 year), all ages



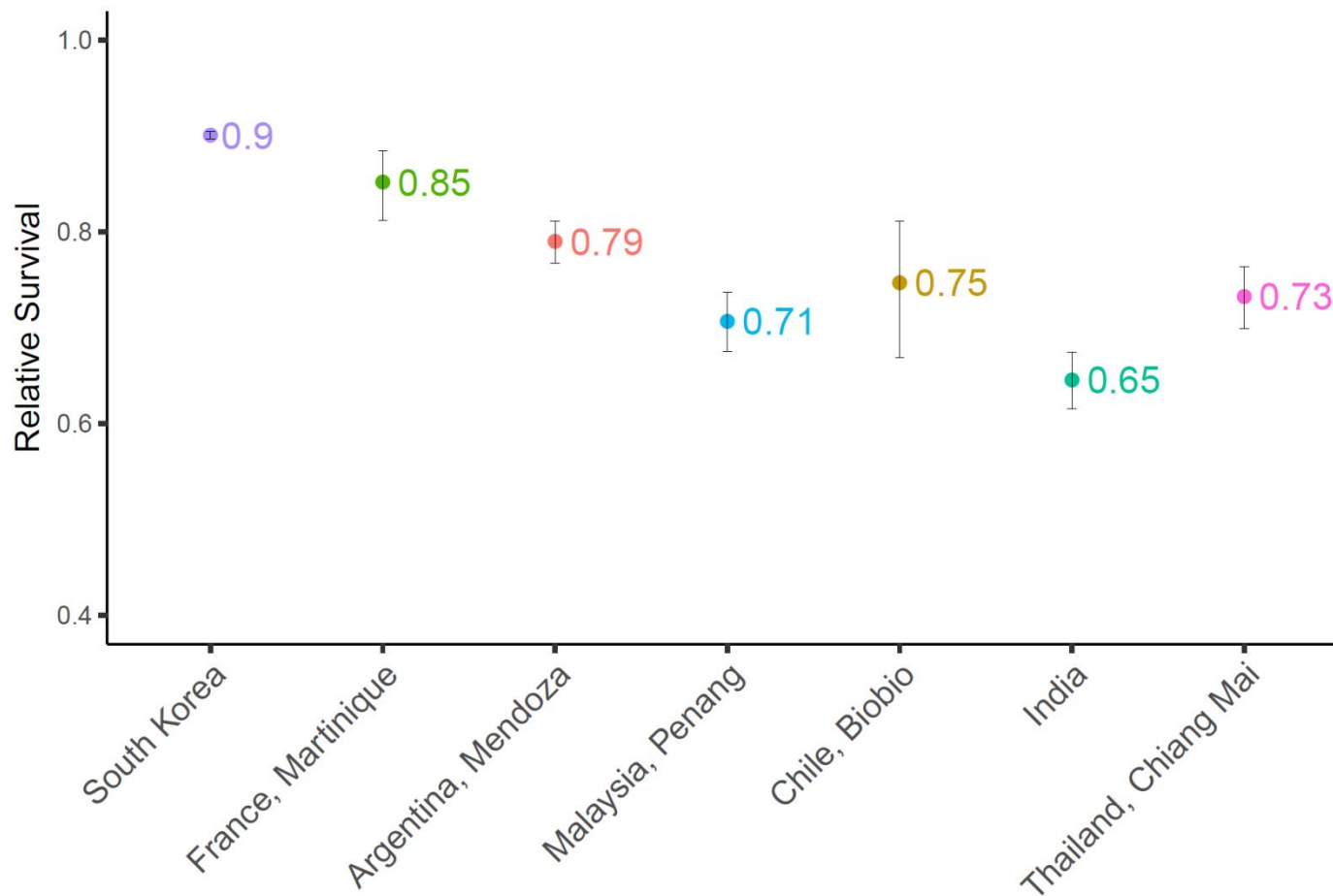
Breast cancer survival (5 year), all ages



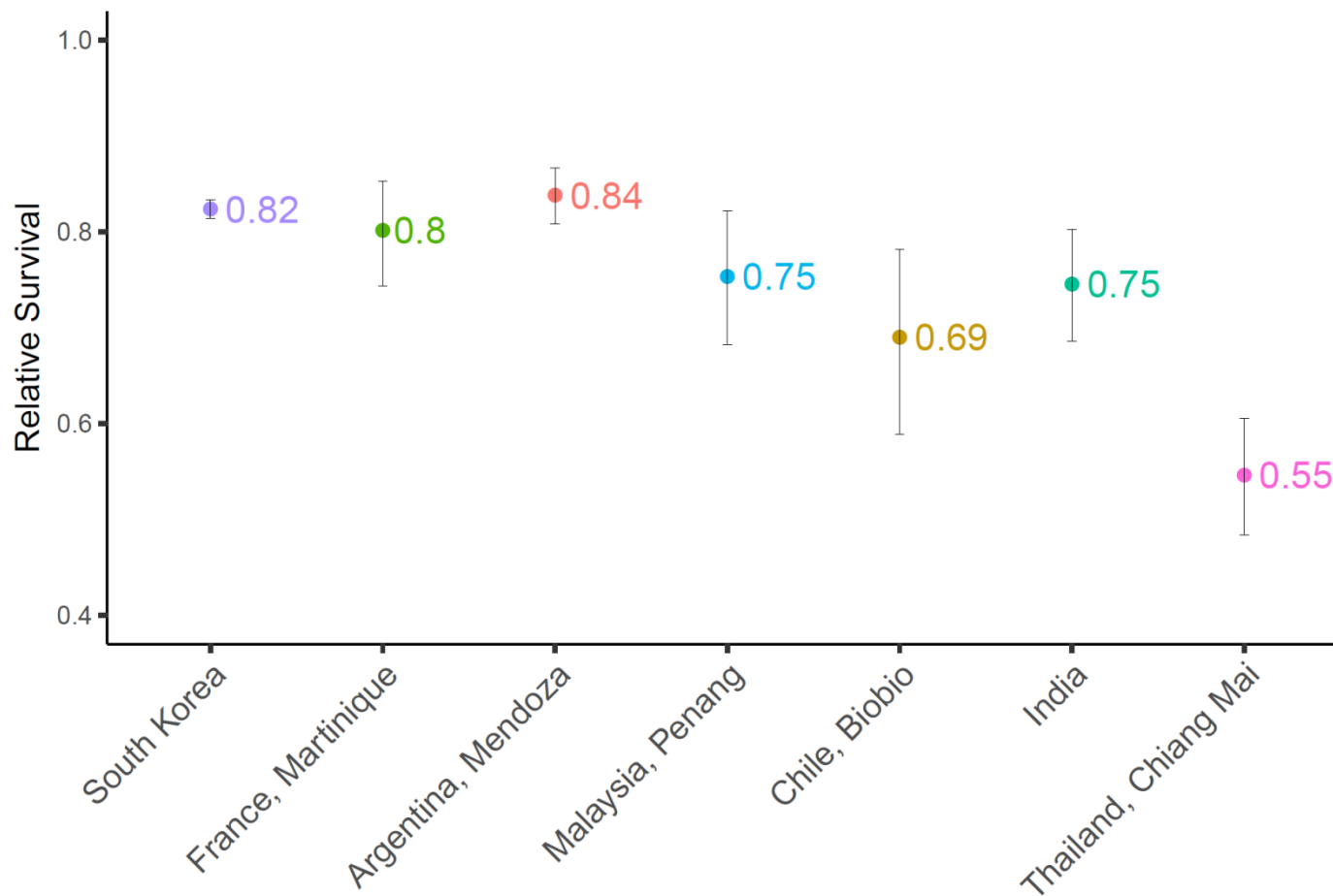
Breast cancer survival (5 year), 15-49 years



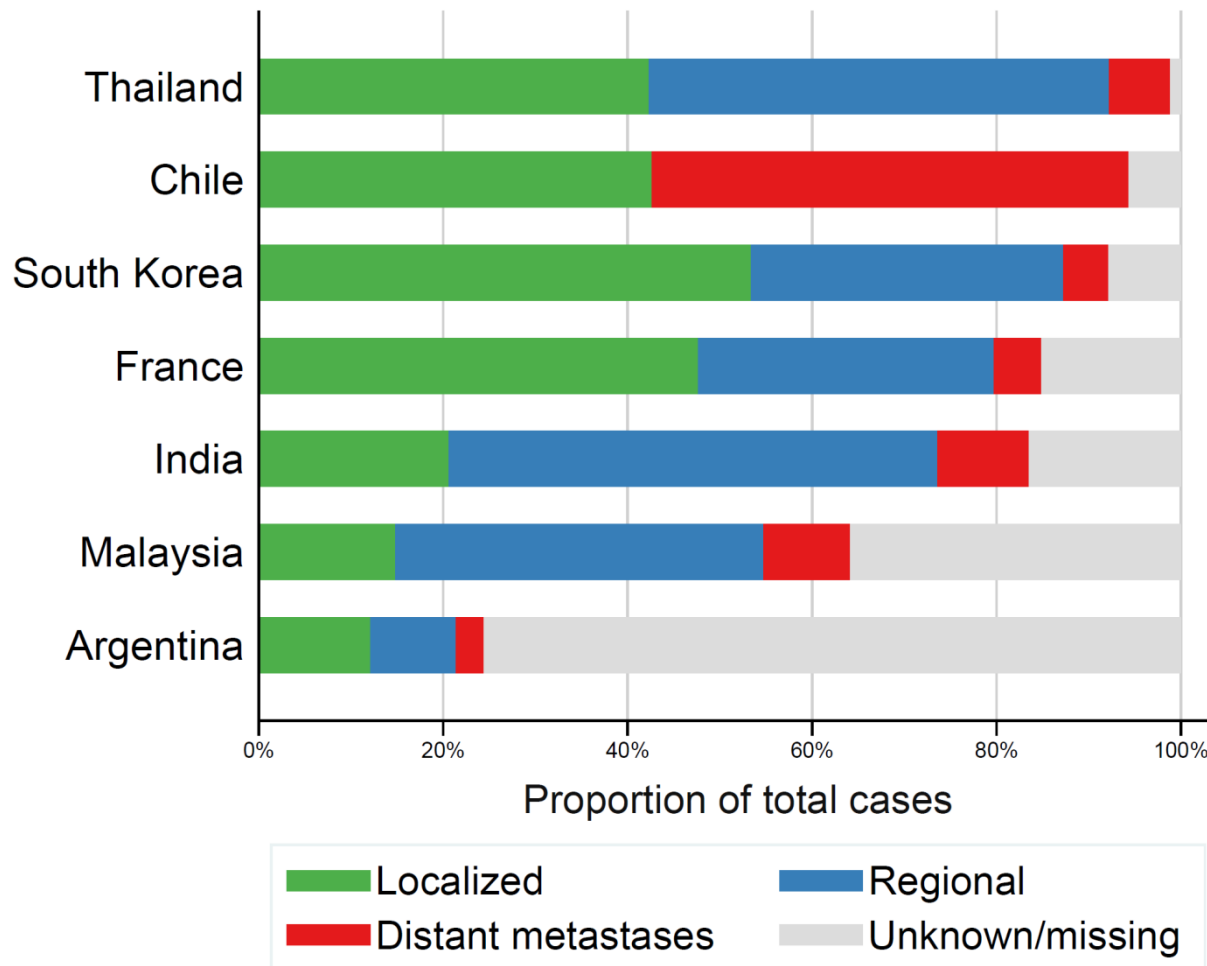
Breast cancer survival (5 year), 50-64 years



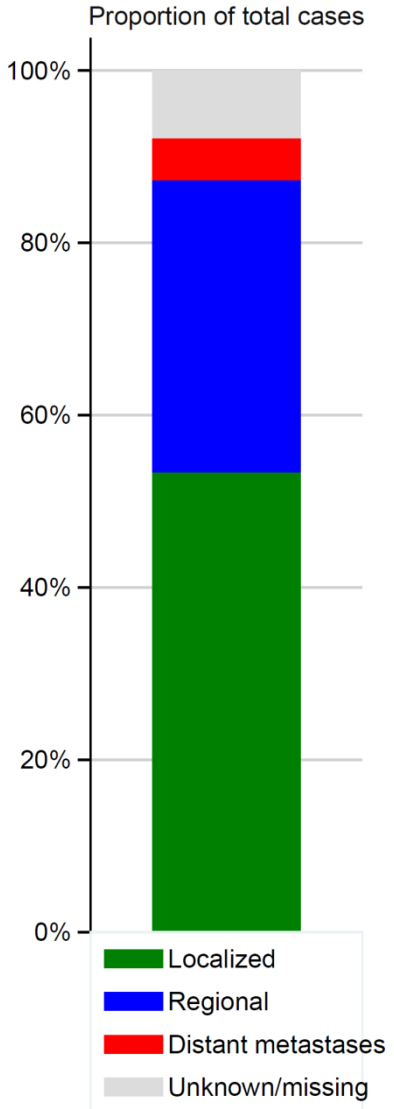
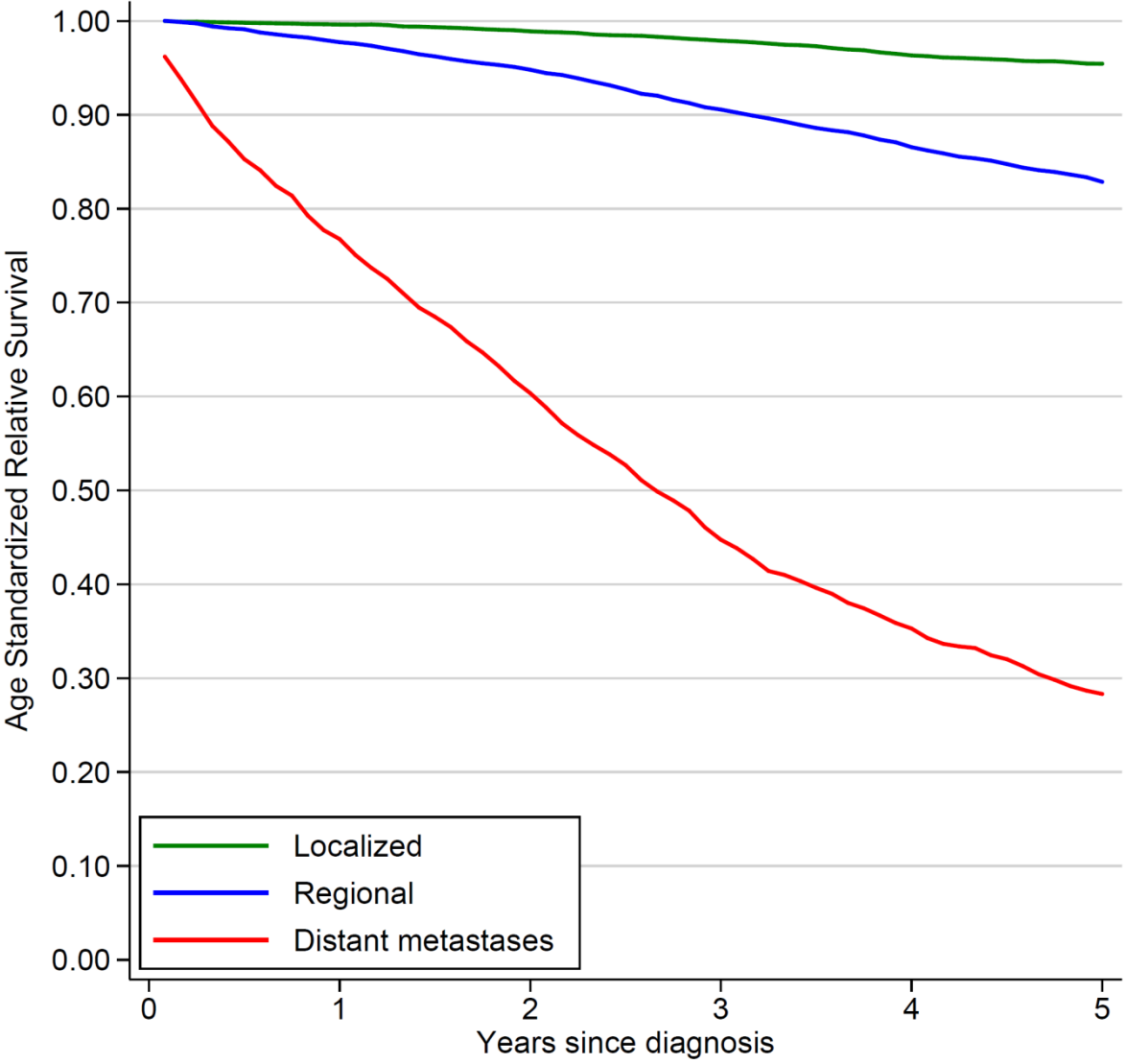
Breast cancer survival (5 year), 65-89 years



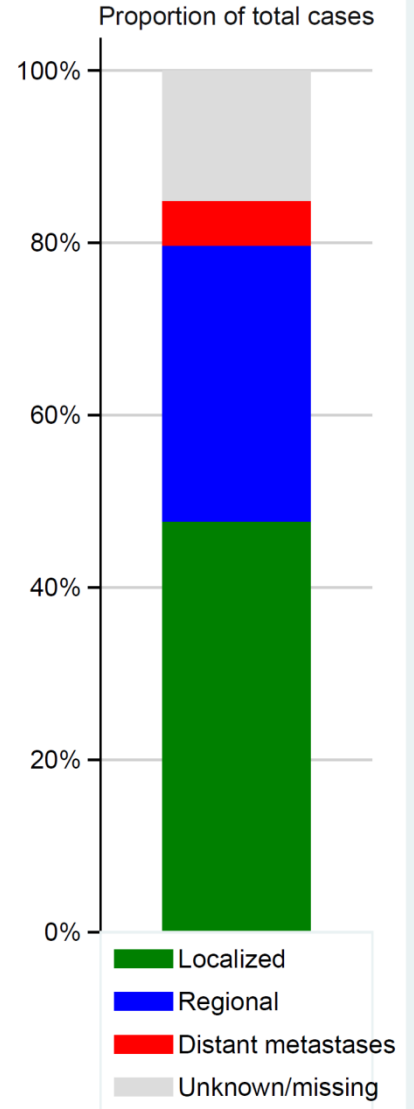
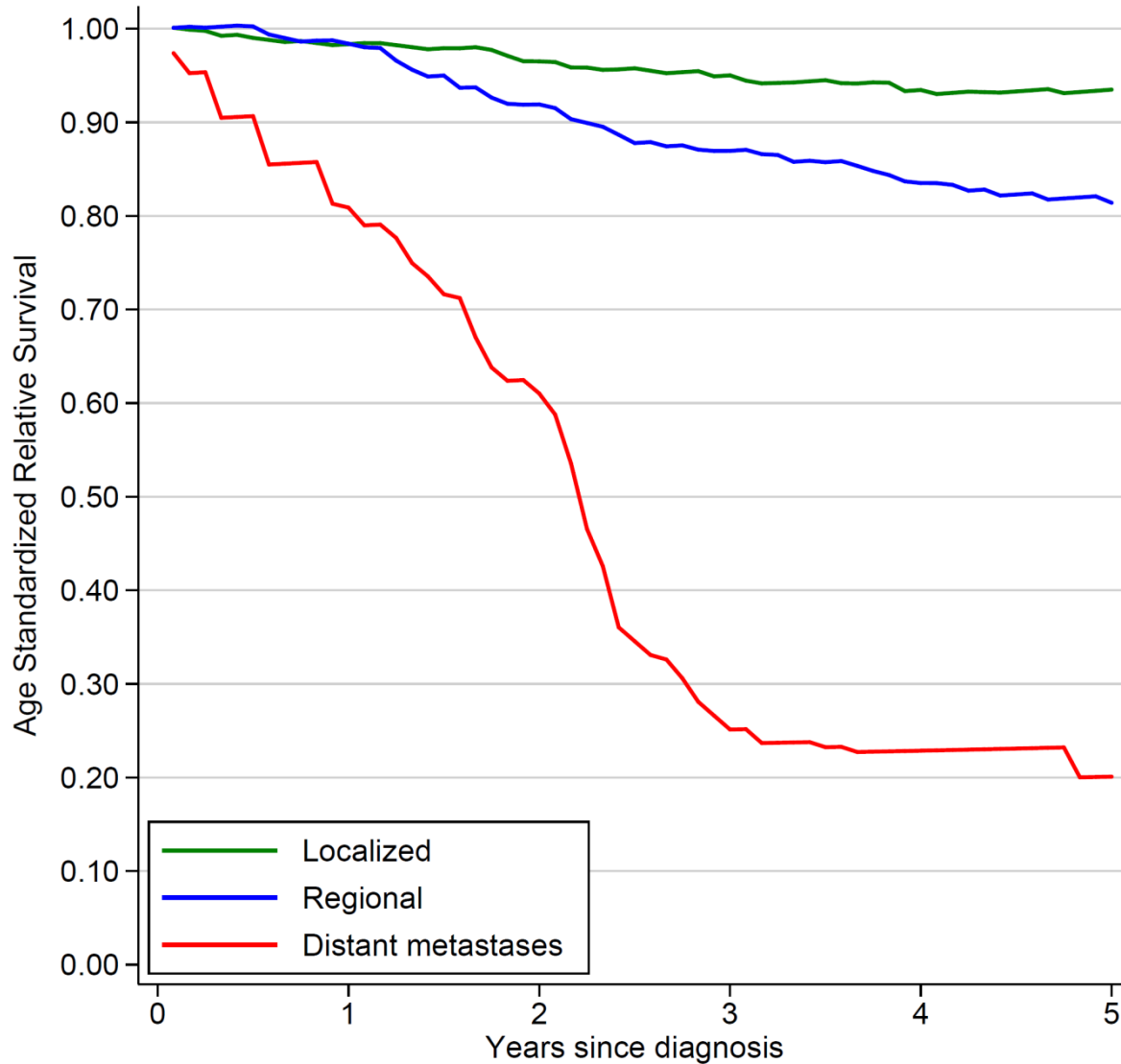
Staging distribution: Breast cancer, by country



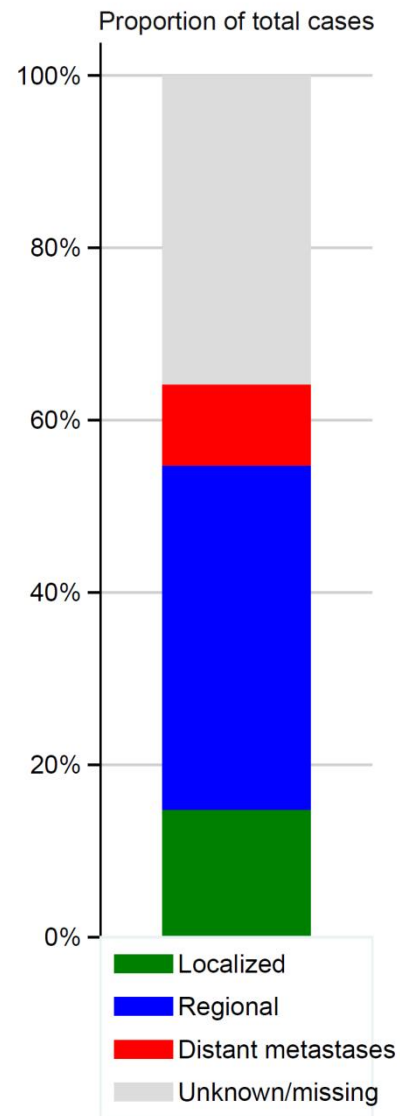
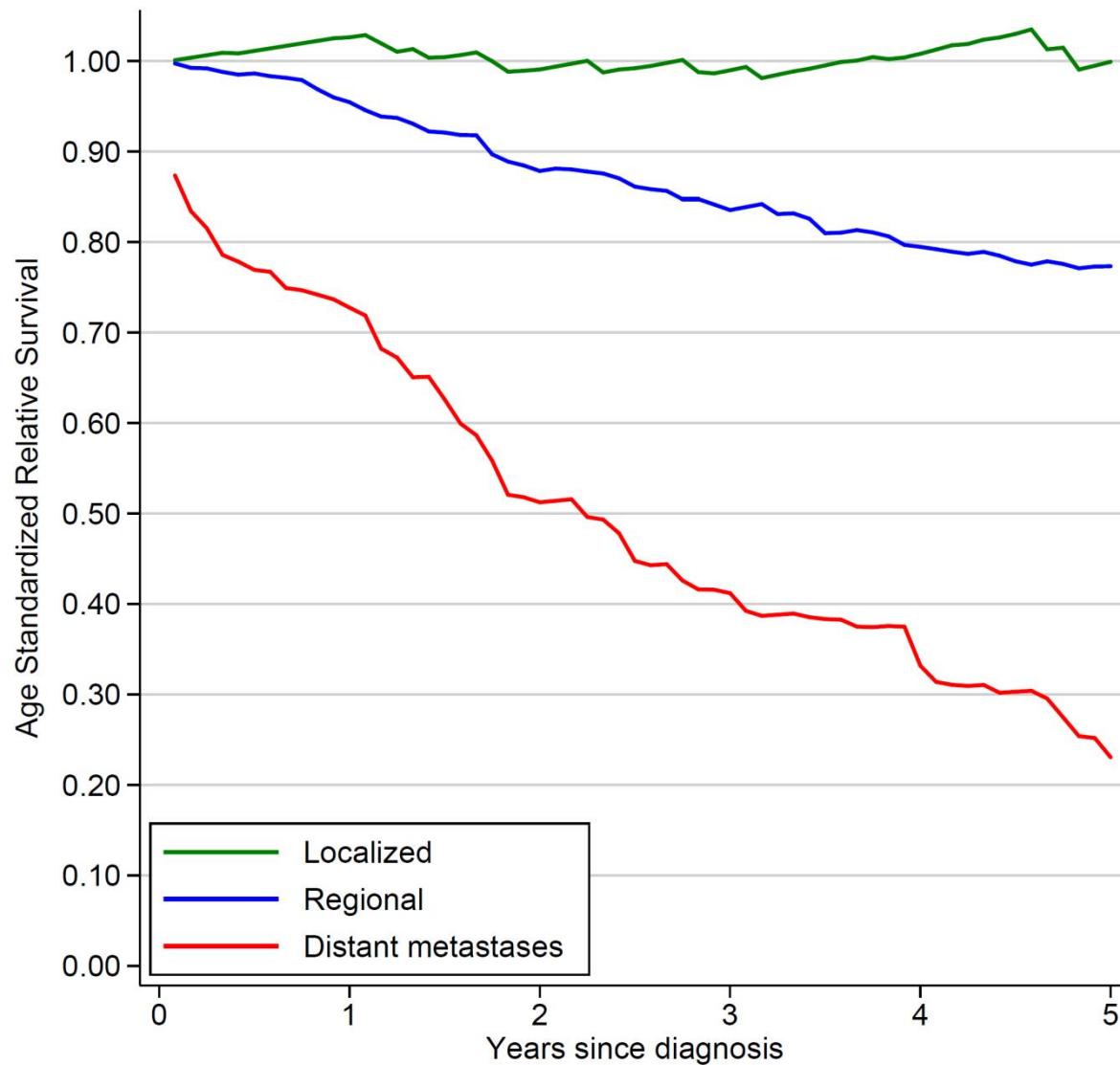
Breast cancer survival by stage, South Korea



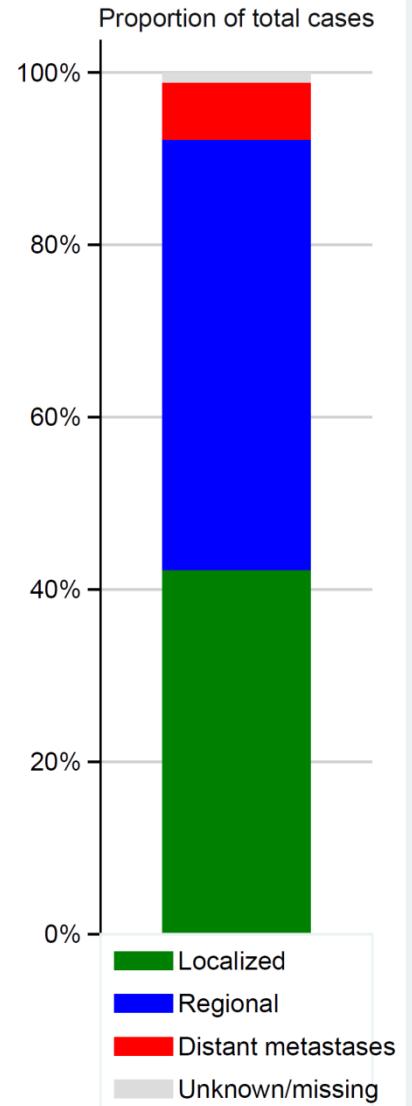
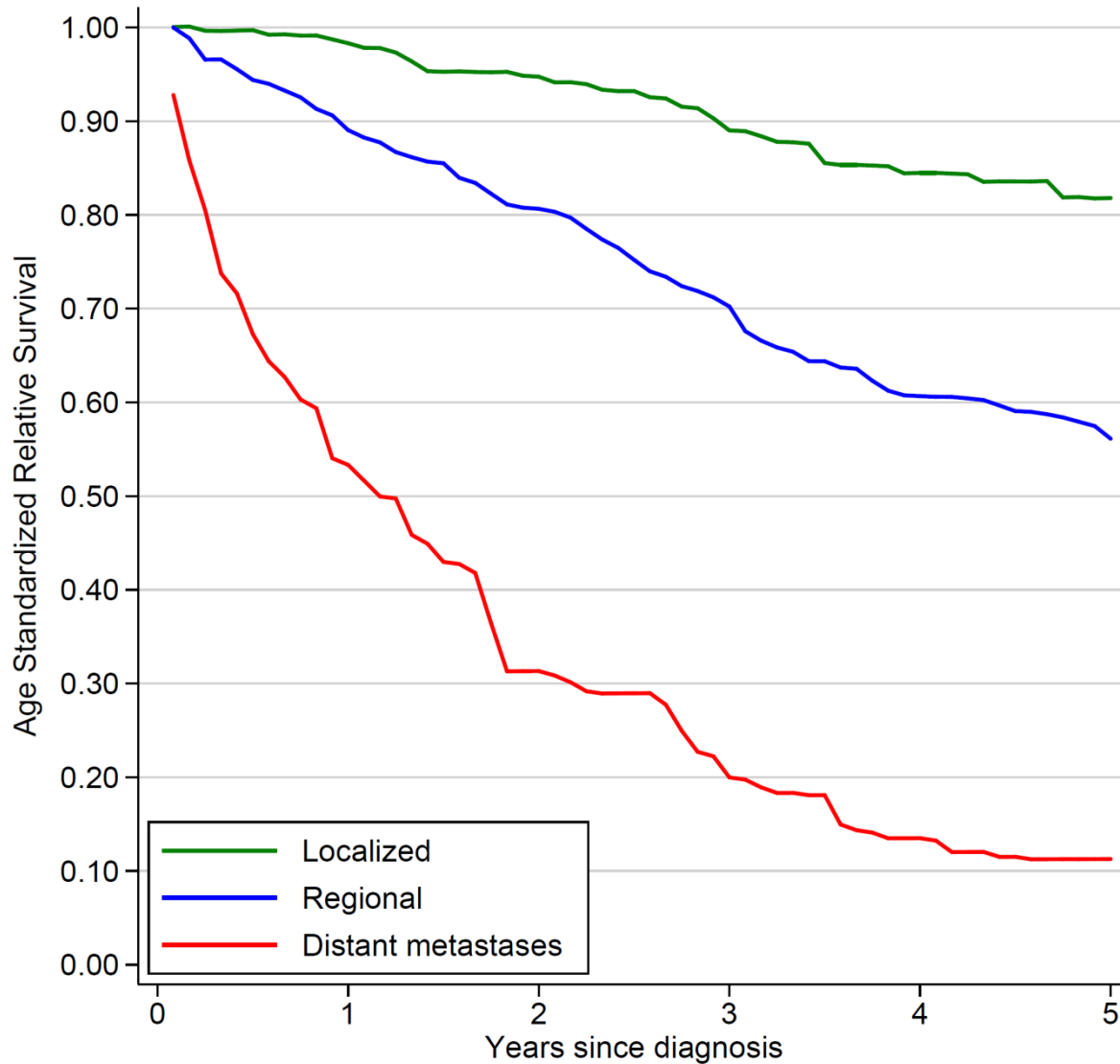
Breast cancer survival by stage, France



Breast cancer survival by stage, Malaysia



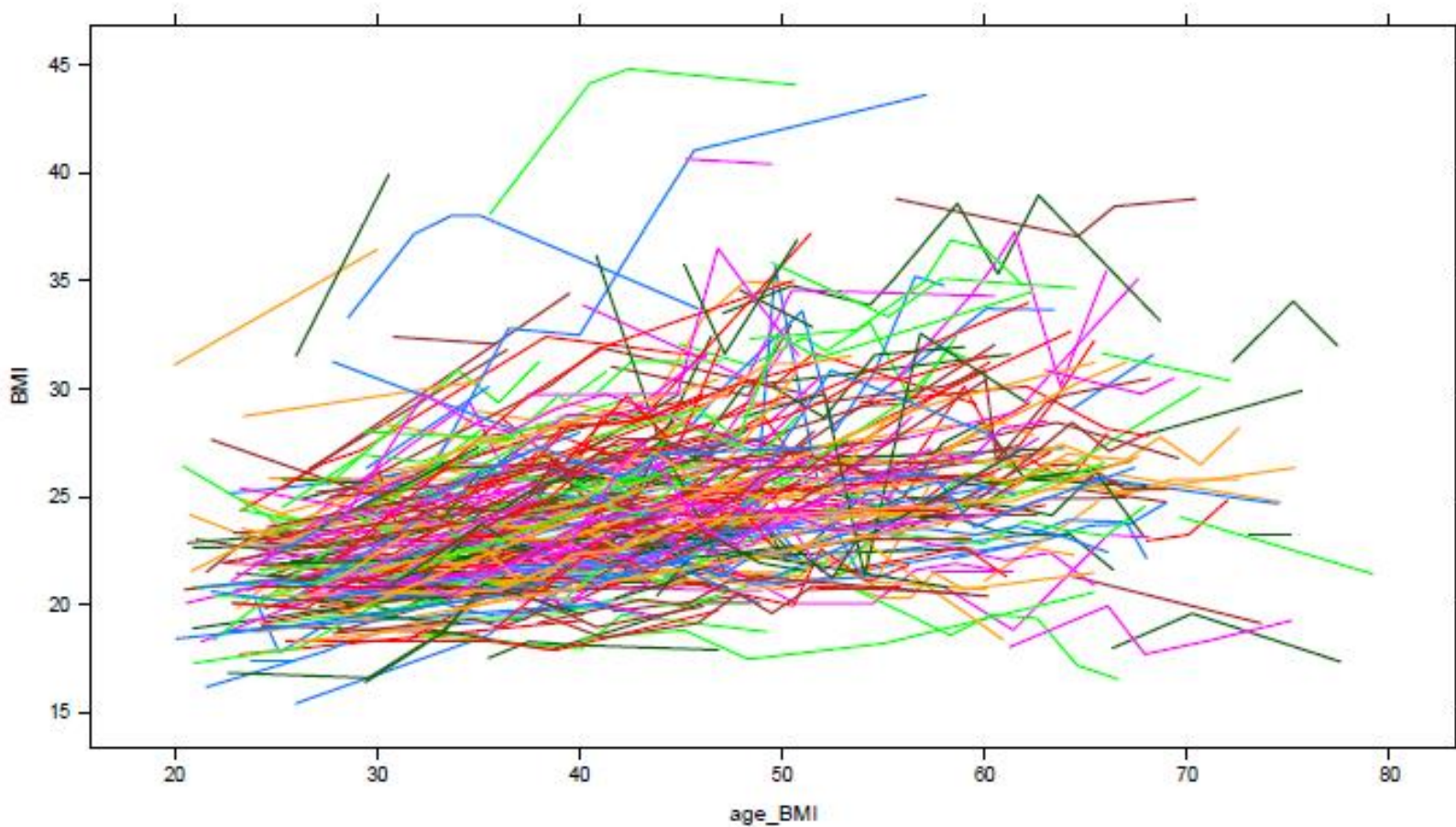
Breast cancer survival by stage, Thailand



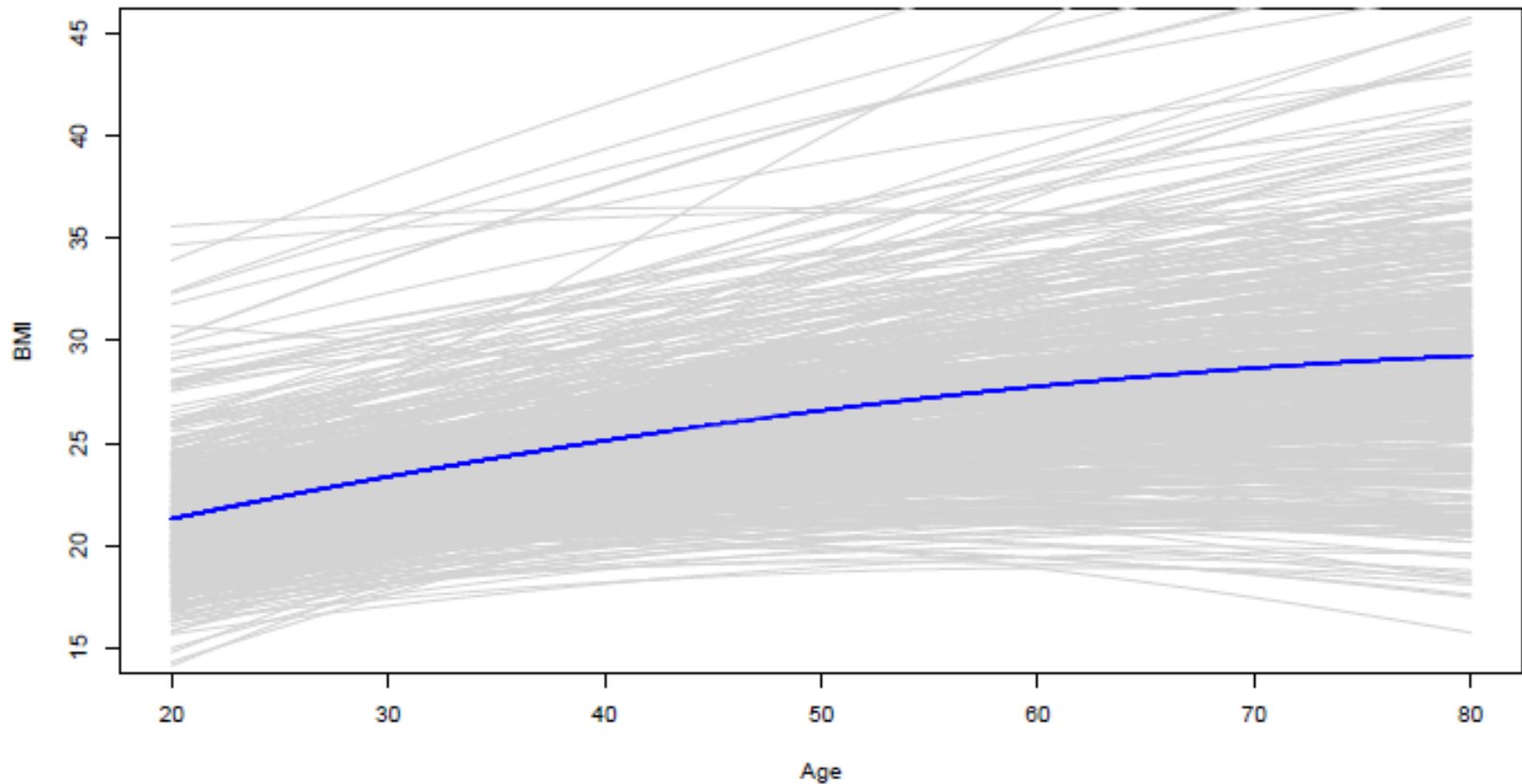
Cohort Consortium: Assessing Impact of Obesity

- Obesity and breast cancer risk (in different ethnicities)
- Lifetime obesity and breast cancer risk
- Impact of obesity (and lifetime obesity) on breast cancer survival

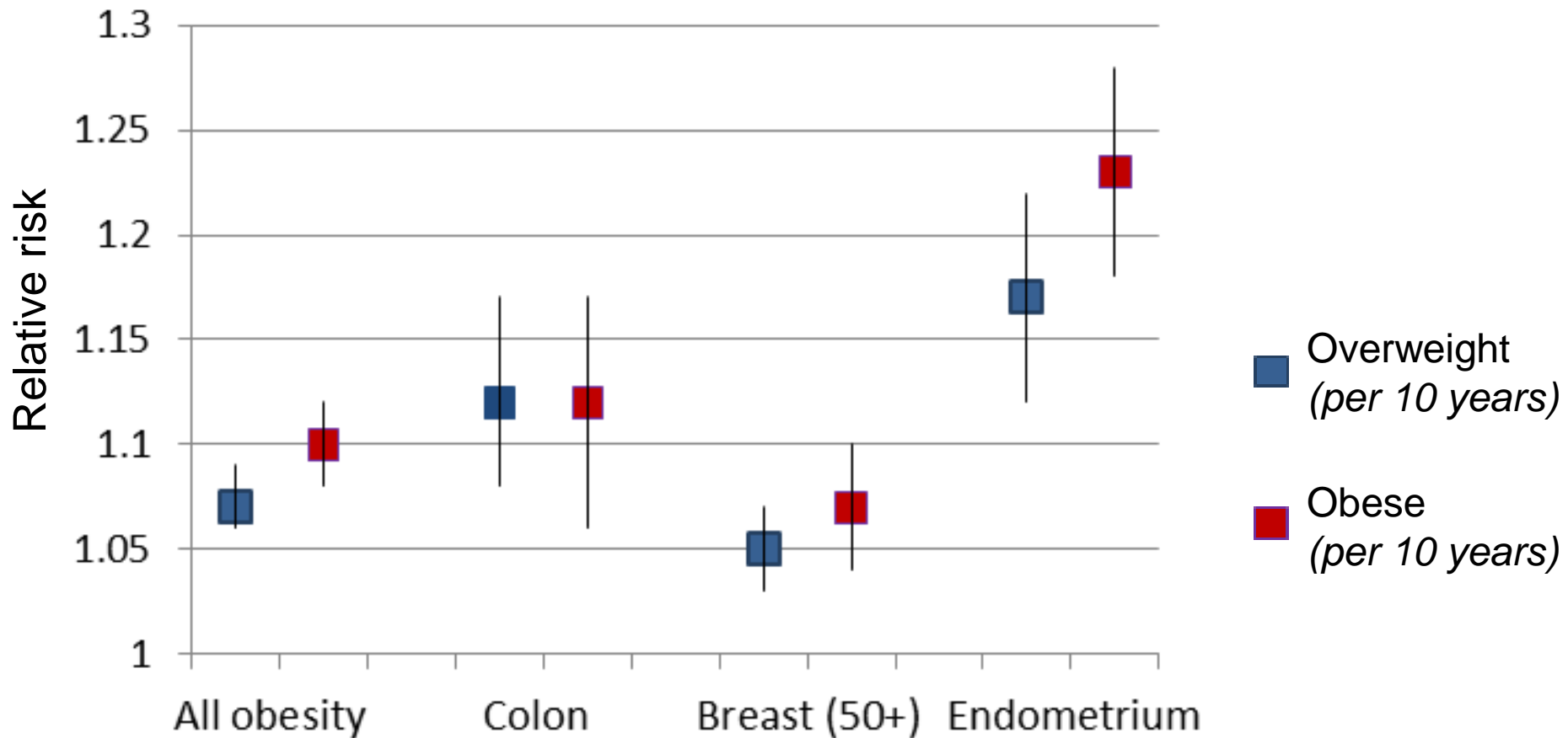
Assessing lifetime body weight



Assessing lifetime body weight



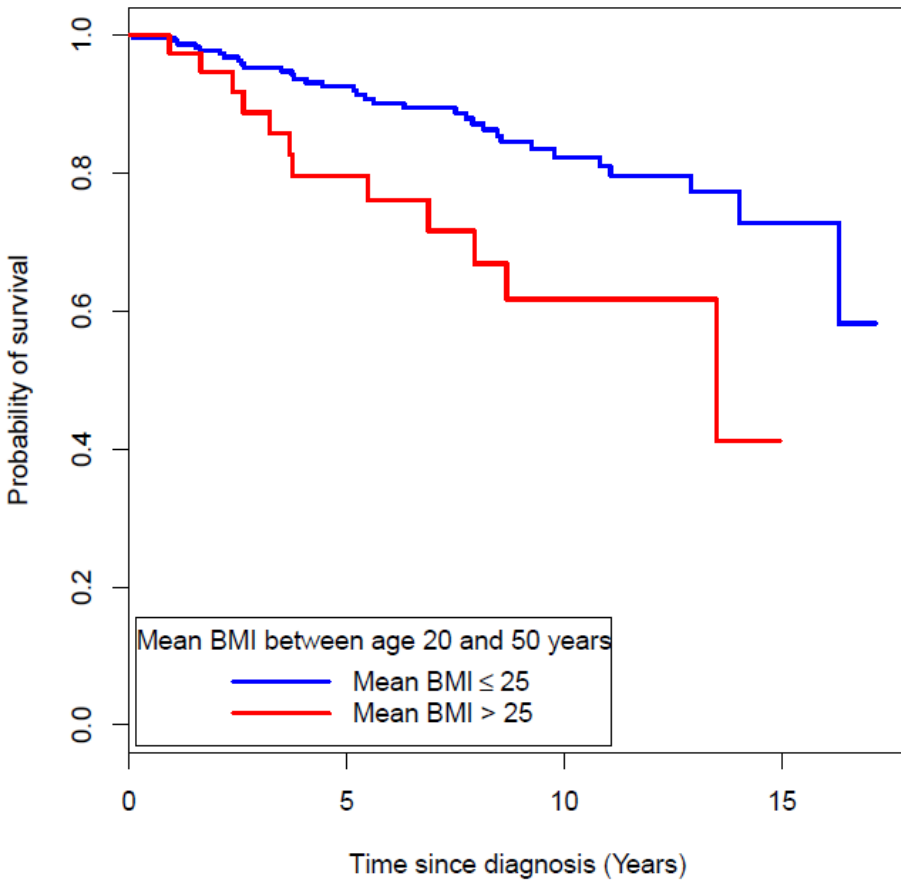
Duration of overweight and obesity and the risk of cancers



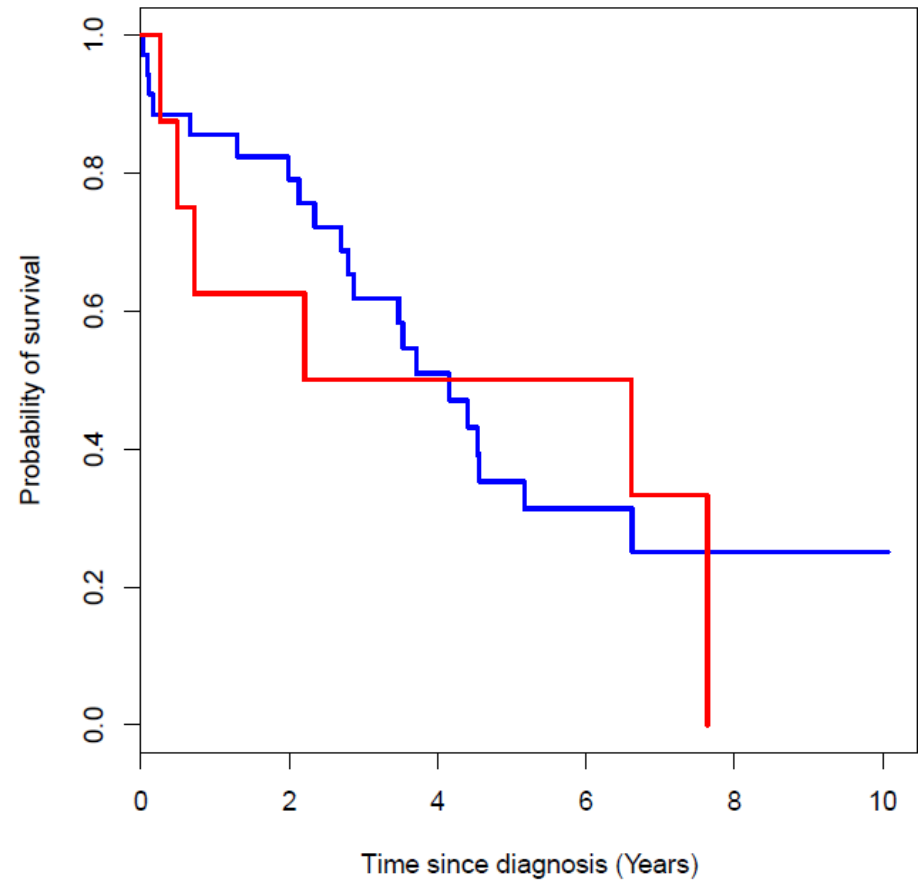
International Agency for Research on Cancer

Breast Cancer Survival by Stage and BMI

Stage II



Stages III and IV



Conclusion

- Breast cancer is an important cancer worldwide
- Incidence is still increasing
- Survival still differ by region
- Consortium – collaboration are important
 - evidence-based management
 - improve outcome

THANK YOU.

International Association for Cancer Registry – SurvCan3
SURVPOOL – Asian Cohort Consortium

Jerome Vignat

Hadrien Charvat

Adalberto Miranda

CSU/IARC